

**NEW
Product**

MICROPITCH 2080FT SERIES BELT

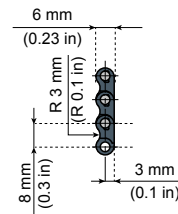
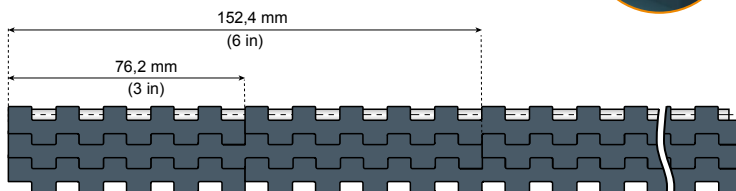
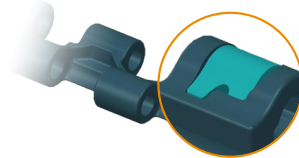
DESIGNED FOR EXTREMELY SHORT HEAD-TO-TAIL TRANSFERS

2080 series micropitch belt (pitch 8 mm) allows for extremely short head-to-tail transfers. Eliminates the need for deadplates and enables even small products to transfer from one conveyor to the next without a hick-up.

The combination with the new silent nose bar design makes the construction simple and will reduce the noise level considerably compared to our standard design.

New clip design:

- "Foolproof" design
- Easy to install and remove

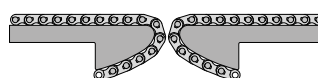


WIDTH W		ITEM DESCRIPTION	
mm	in	NGE (GREY BLUE)	LFB (BLUE)
76	3.00	NGE2080FT-K300	LFB2080FT-K300
152	6.00	NGE2080FT-K600	LFB2080FT-K600
229	9.00	NGE2080FT-K900	LFB2080FT-K900
305	12.00	NGE2080FT-K1200	LFB2080FT-K1200
381	15.00	NGE2080FT-K1500	LFB2080FT-K1500
457	18.00	NGE2080FT-K1800	LFB2080FT-K1800
533	21.00	NGE2080FT-K2100	LFB2080FT-K2100
610	24.00	NGE2080FT-K2400	LFB2080FT-K2400
686	27.00	NGE2080FT-K2700	LFB2080FT-K2700
762	30.00	NGE2080FT-K3000	LFB2080FT-K3000
838	33.00	NGE2080FT-K3300	LFB2080FT-K3300
914	36.00	NGE2080FT-K3600	LFB2080FT-K3600
991	39.00	NGE2080FT-K3900	LFB2080FT-K3900
1067	42.00	NGE2080FT-K4200	LFB2080FT-K4200
1143	45.00	NGE2080FT-K4500	LFB2080FT-K4500
1219	48.00	NGE2080FT-K4800	LFB2080FT-K4800
1295	51.00	NGE2080FT-K5100	LFB2080FT-K5100
1372	54.00	NGE2080FT-K5400	LFB2080FT-K5400
1448	57.00	NGE2080FT-K5700	LFB2080FT-K5700
1524	60.00	NGE2080FT-K6000	LFB2080FT-K6000
1600	63.00	NGE2080FT-K6300	LFB2080FT-K6300
1676	66.00	NGE2080FT-K6600	LFB2080FT-K6600
1753	69.00	NGE2080FT-K6900	LFB2080FT-K6900
1829	72.00	NGE2080FT-K7200	LFB2080FT-K7200
1905	75.00	NGE2080FT-K7500	LFB2080FT-K7500
1981	78.00	NGE2080FT-K7800	LFB2080FT-K7800
2057	81.00	NGE2080FT-K8100	LFB2080FT-K8100
2134	84.00	NGE2080FT-K8400	LFB2080FT-K8400

NG[®]evo Conveyor components made from engineered plastic resin
 Longer wearlife than acetal.
 Lower friction than acetal.
 Good chemical resistance.
 High abrasion resistance.
 It meets the requirement for materials as stated by EC1935/2004 and FDA CFR21 norms for direct food contact.
 Less dust than with acetal chains.
 More.....

Backflex radius: 10 mm (0.39 in)
Max load capacity: 2500 N/m (1845 lbs/ft.)
Weight: 5,5 Kg/m² (1.12 lbs/ft².)
Pin material: PBT (white)
Standard length:
 width ≤ 15 in: 3,040m (380 rows)
 width > 15 in ≤ 66 in: 1,520m (190 rows)
 width > 66 in: on request

Can be used with a Nose Bar to create extremely short transfers.

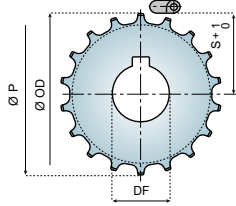


For nosebar visit us at:
www.systemplastsmartguide.com



Features:

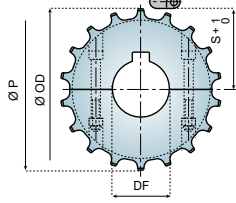
- Split versions: quick and easy replacement.
- Foolproof design.
- Completely closed structure, easy to clean and to disinfect.
- Excellent wear and chemical resistance.
- Recyclable.



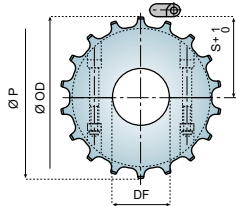
MACHINED DRIVE SPROCKETS - ONE PIECE TIGHT	
Z	Ø 30
ITEM DESCRIPTION	
24	2080-24R30M-DM

Legend:

- Green** = Popular Item
- Black** = Standard Item
- Red** = Item that requires a Minimum Order Quantity (MOQ)



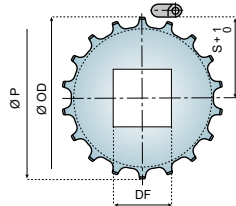
MACHINED DRIVE SPROCKETS - SPLIT FIXED			
Z	Ø 20	Ø 25	Ø 30
ITEM DESCRIPTION			
24	2080-24R20M-DMS	2080-24R25M-DMS	-
32	-	2080-32R25M-DMS	2080-32R30M-DMS
36	-	2080-36R25M-DMS	2080-36R30M-DMS



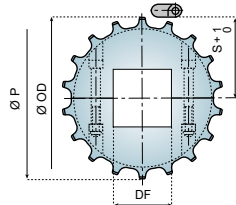
MACHINED RETURN SPROCKETS - SPLIT			
Z	Ø 20	Ø 25	Ø 30
ITEM DESCRIPTION			
36	-	2080-36R25M-RMS	2080-36R30M-RMS

Material: polyamide (natural white), screws in stainless steel, nuts in zinc plated steel.

Z	Ø OD mm	Ø P mm	S mm
24	60,6	61,3	28
32	81,0	81,6	38
36	90,4	91,8	43,5



MACHINED DRIVE SPROCKETS SQUARE BORE - ONE PIECE FLOATING	
Z	Ø 30X30
ITEM DESCRIPTION	
24	2080-24S30M-DM



MACHINED DRIVE SPROCKETS SQUARE BORE - SPLIT FLOATING			
Z	Ø 25X25	Ø 30X30	Ø 40X40
ITEM DESCRIPTION			
32	2080-32S25M-DMS	2080-32S30M-DMS	-
36	-	2080-36S30M-DMS	2080-36S40M-DMS

Material: polyamide (natural white), screws in stainless steel, nuts in zinc plated steel.

SYSTEM PLAST®

System Plast s.r.l.

Via Guareschi, 2
Telgate, 24060 - Italy

Customer Service: 035-83-51-301

Fax: 035-83-51-399

www.regalbeloit.com

APPLICATION CONSIDERATIONS

The proper selection and application of power transmission products and components, including the related area of product safety, is the responsibility of the customer. Operating and performance requirements and potential associated issues will vary appreciably depending upon the use and application of such products and components. The scope of the technical and application information included in this publication is necessarily limited. Unusual operating environments and conditions, lubrication requirements, loading supports, and other factors can materially affect the application and operating results of the products and components and the customer should carefully review its requirements. Any technical advice or review furnished by Regal Beloit America, Inc. and/or its affiliates ("Regal") with respect to the use of products and components is given in good faith and without charge, and Regal assumes no obligation or liability for the advice given, or results obtained, all such advice and review being given and accepted at customer's risk.

For a copy of our Standard Terms and Conditions of Sale, please visit <http://www.regalbeloit.com> (please see link at bottom of page to "Standard Terms and Conditions of Sale"). These terms and conditions of sale, disclaimers and limitations of liability apply to any person who may buy, acquire or use a Regal product referred to herein, including any person who buys from a licensed distributor of these branded products.

Regal, NG and System Plast are trademarks of Regal Beloit Corporation or one of its affiliated companies.

©2018, 2020 Regal Beloit Corporation, All Rights Reserved. MCSSP20061E • Form# 10156E

