

SYSTEM PLAST®

Instruction for disconnecting/reconnecting 2253 Roller Top Belt

Motion Control Solutions
Regal Rexnord

Application Engineering: 800 626 2093

PTSAAppEng@regalrexnord.com

regalrexnord.com/SYSTEMPLAST

FORM

10022E

Revised

August 2022

⚠ DANGER Indicates a hazard which, if not avoided, will result in serious injury or death.

⚠ WARNING Indicates a hazard which, if not avoided, could result in serious injury or death.

⚠ CAUTION Indicates a hazard which, if not avoided, could result in minor or moderate personal injury.

NOTICE Indicates information considered important, but not hazard-related (e.g. messages relating to property damage).

GENERAL SAFETY INSTRUCTIONS

⚠ WARNING

- Read and follow all instructions carefully.
- Disconnect and lock out power before installation and maintenance. Working on or near energized equipment can result in severe injury.
- Do not operate equipment without guards in place. Exposed equipment can result in severe injury or death.
- Read and understand the information in this section and in this manual completely before installing, operating or maintaining this equipment. Failure to follow this instruction could result in severe injury or death.

⚠ CAUTION

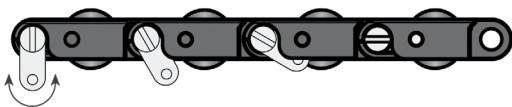
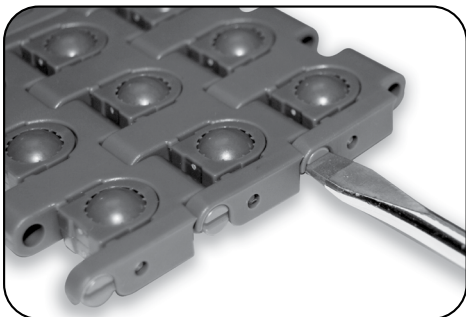
- Perform periodic inspections. Equipment may fail prematurely and could become unsafe if not properly inspected and maintained. Failure to follow this instruction could result in mild or moderate personal injury.

Disconnecting and Reconnecting of the Belt

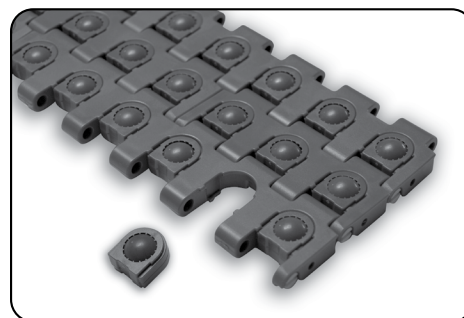
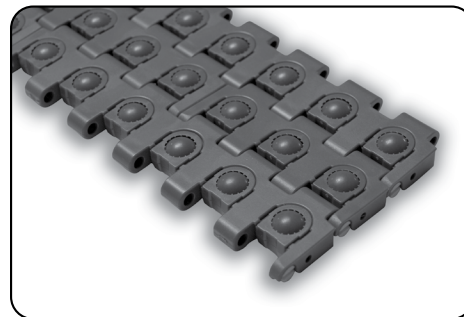
Follow the procedure below to disconnect and /or reconnect the belt when installing the conveyor or doing maintenance.

1) Procedure for disconnecting and reconnecting

Open the clip with a screwdriver by rotating about 90 degrees.



2) Procedure for changing the balls or the retainers.



"Regal Rexnord" is not indicative of legal entity. Refer to product purchase documentation for the applicable legal entity.

Regal Rexnord and System Plast are trademarks of Regal Rexnord Corporation or one of its affiliated companies.

© 2016, 2022 Regal Rexnord Corporation, All Rights Reserved. MCIM22084E • Form# 10022E

RegalRexnord™